

**SELECT
UPCOMING
EVENTS:**

9/12/12 -
Charles H.
Lydecker
*President of Retail
Operations*
Brown and Brown

9/19/12 -
Marc Armstrong
Class of 1979
Managing Principal
AON Risk
Solutions

Join us every
Wednesday in
Alter Hall A031
from 12-12:50PM!

**IMPORTANT
DATES**

- 9/11 Graduating
- 9/14 Senior Interview
- 9/15 Skills Workshop

- 9/14 Mix & Mingle

- 9/14 Bake Sale

- 9/19 Picture Day

- 9/19 Welcome Back Reception

- 9/19 Gamma Games

Send your feedback
concerning Risky Business to :

Bryan.ernst@temple.edu

Risky Business

VOLUME XXIX, ISSUE 11

SEPTEMBER 10, 2012

The H. Wayne Snider Distinguished Guest Lecturer Series presents:

Charles H. Lydecker, CPCU, CIC, AIM

President of Retail Operations

Brown & Brown

Wednesday, September 12, 2012, Alter Hall 031 - 12-12:50PM



Mr. Charles H. Lydecker is President of the Brown & Brown's Retail Division, headquartered in Daytona Beach, Florida. He oversees the retail profit center operations for Brown & Brown, Inc. Brown & Brown is the 6th largest commercial insurance agency in the United States, has 5,500 employees and 184 offices in 34 states. Brown & Brown is a publicly traded company on the NYSE under the trading symbol BRO.

Mr. Lydecker has been with Brown & Brown since 1990. In January 2011, Mr. Lydecker was elected Regional President. From January 1999 until 2003, and commencing again in 2004 until 2006, he served as profit center leader in Daytona Beach, Florida. Prior to that, Mr. Lydecker served as an account executive from 1990 to 1995 and as Sales Manager of the Company's Daytona Beach, Florida retail office from 1995 to 1999.

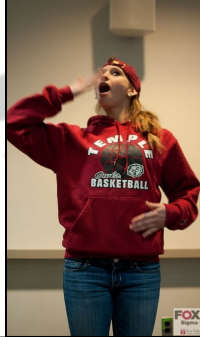
Charlie is a 1985 graduate of American University with degrees in Political Science and Business Administration. He attended college on a full athletic scholarship as a member of the American University Swim Team. Charlie has also earned the Chartered Property Casualty Underwriter (CPCU), Certified Insurance Counselor (CIC), and Associates in Management (AIM) designations.

Charlie is Chairman of The Florida Birth Related Neurological Injury Compensation Association (NICA), a Director of Gateway Banks of Florida, and Stonewood Holdings, LLC (a Florida-based restaurant chain), and he is a member of the Board of Trustees of American University in Washington D.C. Charlie has served two terms as Vice Chairman of the Florida Ethics Commission, Vice Chairman of the Florida Self-Insurers Guaranty Association, Chairman of the Florida Housing Finance Corporation and an Executive Board Member of the Florida State Fair Authority. He is a past Chairman of Futures Public Education Foundation, the United Way of Volusia/Flagler (FL) Counties, and the Boy Scouts of America in Daytona Beach. He has twice served as Chairman of the Daytona Beach/Halifax Area Chamber of Commerce and is an alumnus of Leadership Florida and Leadership Daytona Beach.

2012-2013 Charity of Choice - ESF Dream Camp

Sigma Chapter of Gamma Iota Sigma is proud to announce our 2012-2013 academic year Charity of Choice, ESF Dream Camp. ESF Dream Camp transforms the lives of low-income, urban youth through innovative yearlong programs that nurture the individual, educate the mind, and inspire the spirit. Our goal of \$7,500 will help ESF Dream Camp continue their work in the community. Members can contribute in many ways, including participating in charity drawings at Wednesday meetings and buying baked goods from Gamma Iota Sigma bake sales!

To learn more, visit <http://www.esfdreamcamp.org/>



Bake Sale

Friday, September 14, 2012 - 9am-3pm
Alter Hall Lobby
Come buy our delicious home made baked goods. All proceeds to go our Charity of Choice!

22nd Semi-Annual Gamma games

Wednesday, September 19, 2012
Pearson 145 - 5:30-8pm

Join in the fun at the premier Sigma Chapter social event of the fall semester!



Mix & Mingle
Friday, September 14, 2012
12-12:50pm
Room TBA

Join this informal gathering to help introduce our new members to some of the other members and officers in Gamma Iota Sigma. New and former members will learn about the programs offered by the Sigma Chapter, the benefits of becoming a member, and have the chance to network with their peers.

Committee Meetings Start Monday, September 10, 2012!

Please contact one of the committee heads below if you have any questions regarding your committee.
Contact Elizabeth Caracino at elizabeth.caracino@temple.edu if you have not been assigned to a committee.
Committees meet every other Monday at 12-12:50pm.

Student Affairs - SAC 217C

Thomas Metzger | thomas.metzger@temple.edu

Career Development - RMI Students - SAC 217A

Gina Ross | regina.ross@temple.edu

Career Development - AS Students - SAC 200C

Seth Ehrlich | seth.ehrlich@temple.edu

Math Competition - SAC 220

Professor McCloskey | michael.mccloskey@temple.edu

Community Affairs - SAC 217D

Jessica Kearney | jessica.kearney@temple.edu

Public Relations - SAC 217B

Justin Kemp | justin.kemp@temple.edu

MIS - Alter 601C

Dong Wu | dong.wu@temple.edu

				1	7	8	2		
				5	1	2			
		4		3	4				
9						2	8		
								1	
						2	5		4
						8			
						2	5		6
						9			

RBD Warning: Sudoku is not intended to treat, cure or reduce in-class boredom. Please see your professor for side-effects of in-class use.
Use at your own risk!!