



# RISKY BUSINESS

TEMPLE UNIVERSITY, FOX SCHOOL OF BUSINESS, DEPARTMENT OF RISK, INSURANCE AND HEALTH CARE MANAGEMENT

## H. WAYNE SNIDER DISTINGUISHED GUEST LECTURER SERIES



**Bryan Peters**  
DIRECTOR, CORPORATE  
SERVICES &  
ENVIRONMENTAL  
SUSTAINABILITY  
CIGNA  
PHILADELPHIA, PA

### ALTER HALL AUDITORIUM

12:00PM TO 12:50PM  
WEDNESDAY, APRIL 6, 2011



**CIGNA**

Bryan Peters is the Director of Corporate Service Operations and Environmental Sustainability for CIGNA. In addition to guiding corporate environmental sustainability, Bryan leads a CIGNA task force on external Corporate Social Responsibility Reporting. In addition, he leads a variety of corporate wide administrative areas including travel, group meetings, food services and corporate archives.

Mr. Peters will join us at Temple University's Fox School of Business in early April for *Green by Design Week*; a week of events showcasing sustainable business practices. This series of special events – generally free for students and open to the public – will focus on the environmental outcomes of business practice. Also highlighted are the social concerns of businesses; and the governance, oversight and disclosure of ethical business conduct, among many other topics.



Check out Gamma Facebook for more information on  
Brian Peters & CIGNA

### THIS WEEK IN GAMMA

#### MONDAY

#### Committee Meetings

#### WEDNESDAY

#### Wednesday Meeting

-Speaker: Bryan Peters

#### FRIDAY

#### Philly I Day

-Philadelphia Convention Center  
8-4:00pm

#### Gamma Gala Dinner

-Crowne Plaza Hotel 6-10:00 pm

#### SATURDAY

#### BA 2101 Workshop

-Alter 031 9-12:00 pm

### NEXT WEEK IN GAMMA

#### TUESDAY

#### RIMS Meeting

-Alter Hall MBA Commons 8:00am

#### WEDNESDAY

#### Wednesday Meeting

-Speaker: Kevin McDermott, CPCU

#### FRIDAY

#### Philadelphia Excursion

-April 15-17th

#### Workshops

-AS: CERA Designation

-RMI: Excess and Surplus Risks

#### Bowling Extravaganza

-Pinsetters 9:30-11:30pm

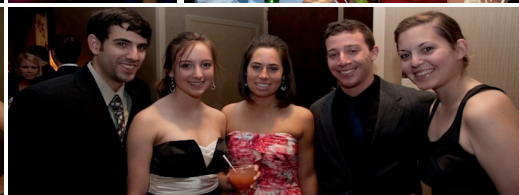
## Sigma Chapter's Premier Social Event of the Year

### 20th Annual Gamma Gala

Crowne Plaza Hotel

18th & Market Streets Philadelphia

Friday, April 8, 2011 6-10:00pm





## 20th Annual Gamma Gala

The Gamma Gala is a seated dinner with fellow classmates and faculty. Check out the program below for more details. Cocktail hour will be from 6-7:00pm with dinner beginning promptly at 7:00pm. Be sure to look your best for this marvelous evening, as it will certainly be one to remember.

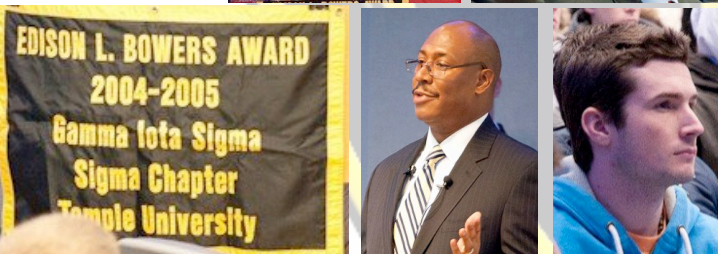
The evening's events will include:

- Initiation of new members into Sigma Chapter
- Recognition of those who have achieved the status of Membership with Academic Distinction
- Recognition of Outstanding Committee Members
- Recognition of the 2011 Sigma Chapter Member of the Year
- Recognition of the 2011 Outstanding Teacher of the Year
- Dessert Buffet
- A Keynote Alumni Speaker

Paid members are welcome to bring guests that are non-members for an additional \$45 per person.

*If you have not submitted your RSVP  
please email: [john.dimartino@temple.edu](mailto:john.dimartino@temple.edu)*

*Friday, April 8, 2011 6-10:00pm Crowne Plaza Hotel Philadelphia*



## BA 2101 Workshop

This is the **ONLY** workshop for the class. If you fail to arrive on-time and stay until the end, you will not receive credit for attending the workshop. If you have already been CSPD'd you **DO NOT** have to attend this workshop. However, you must bring documentation that you are CSPD'd to receive credit for this workshop.

**Saturday, April 9, 2011 9am-12:00pm Alter 031**  
For more information, email [dominica.hendler@temple.edu](mailto:dominica.hendler@temple.edu)

*For more information, email [dominique.beadle@temple.edu](mailto:dominique.beadle@temple.edu)*

## Philly I Day

Philly All Industry Day brings representatives, members of professional societies and others in the insurance industry together for a full day of networking and educational events. A full schedule from 8am-4:15pm begins with a panel of industry professionals such as President and CEO of Marsh & McLennan, Brian Duperreault, CEO and Chairman of CNA Financial Corporation, Thomas Motamed and many others including appointed Pennsylvania insurance Commissioner, Michael Consedine, Esq.

Attendees will have their choice of one of 4 topics to attend for each morning and afternoon sessions. Some of the issues that will be discussed include “Managing Organizational Crisis in Today’s World,” “Financial Health of the Property & Casualty Industry,” and “Through the Economic Crisis and Beyond: How the P&C Industry is Likely to Recover from the Recent Turmoil in the Economy and Financial Markets.” This is an extraordinary networking opportunity for all majors in RMI and Actuarial Science. See below for contact information.

**Friday, April 8, 2011 Philadelphia Convention Center**  
For more information, email [cliff.gallen@temple.edu](mailto:cliff.gallen@temple.edu)

**Committee Meeting: Monday, April 4, 2011**  
**12-12:50**

Risk Management Career Development Committee	<b>SAC 217 A</b>
Actuarial Science Career Development Committee	<b>SAC 217 B</b>
Student Affairs Committee	<b>SAC 217 C</b>
Community Affairs Committee	<b>SAC 217 D</b>
Public Relations Committee	<b>SAC 223</b>
Math Competition Committee	<b>SAC 220</b>
MIS Committee	<b>GIS Office</b>



## RBD WARNING:

Sudoku is not intended to prevent, treat, mitigate or cure boredom during class time.

	1			2				
		6					9	
8	2		1	9			4	
		1			4			3
	9		5		3		2	
3			7			5		
	7			3	1		5	6
	8					1		
				4			3	