



# RISKY BUSINESS

TEMPLE UNIVERSITY, FOX SCHOOL OF BUSINESS, DEPARTMENT OF RISK, INSURANCE AND HEALTH CARE MANAGEMENT

## H. WAYNE SNIDER DISTINGUISHED GUEST LECTURER SERIES



### ALTER HALL AUDITORIUM

12:00PM TO 12:50PM

WEDNESDAY, MARCH 2, 2011

**CHARTIS**

Your world, insured

Matt is a Vice President in the Private & Non-Profit Executive Liability Division of Chartis, responsible for managing the Mid-Atlantic Region and leads the Passport Strategic Initiative team for the division. During his thirteen year tenure and multiple roles of increasing responsibility in Executive Liability, he has performed financial, strategic and leadership analyses on tens-of-thousands of organizations. Prior to joining Chartis, he was a broker with Hobbs Group and Johnson & Higgins of Pennsylvania placing various property & casualty lines of coverage in the Philadelphia marketplace.

Matt earned his Bachelor of Business Administration from Temple University in Risk Management and Insurance and his Masters of Business Administration from Drexel University with a focus in Finance. He is a Certified Six Sigma Green Belt, a member of the Insurance Society of Philadelphia Leadership Training Advisory Board, a Certified Continuing Education Instructor, and a regular speaker at Temple University's Risk Management and Insurance Department.



Check out Gamma Facebook for more information on Matt Kletzli & Chartis.

### MATT KLETZLI (CLASS OF 1993)

VICE PRESIDENT  
EXECUTIVE LIABILITY  
CHARTIS  
PHILADELPHIA, PA

### THIS WEEK IN GAMMA

#### MONDAY

**Committee Meetings**

#### WEDNESDAY

**Wednesday Meeting**

-Speaker: Matt Kletzli

#### FRIDAY

**Bake Sale**

**NO WORKSHOPS!**

### NEXT WEEK IN GAMMA



## CONGRATULATIONS TO EVERYONE WHO ATTENDED THE RMI INTERN CAREER RECEPTION!

### Some Helpful Tips for the Interview Process

**1. RESEARCH!** This should be your first step before interviewing with any company. Look at the company's website and research them in the news so that when the interviewer asks the questions, "What do you know about our company?" or "Why do you want to work for us?" you can impress them with your knowledge.

**2. Arrive on-time** and on-time means fifteen minutes early. Allowing yourself this extra time will ensure you arrive when you are supposed to, but may also give you time to sit down and relax before you head into your interview.

**3. Make eye-contact and smile!** It seems so simple, but sometimes nerves can get the better of us so consciously remind yourself to do these things.

**4. Bring a note pad** - Remember an interview is not just about the company representative getting to know you, but also about you getting to know the company. You may want to jot down a few notes about why you would want to work there.

**5. Prepare questions** for the interviewer ahead of time. Insightful questions about the insurance industry or the specific company you are interviewing for can set you apart from your competition. Make sure your questions are relevant, intelligent, and interesting.

**6. Send a hand-written Thank You** whenever possible! You have probably been told to do this many times, but even still, most people opt for the e-mail Thank You. Sending a hand-written one can make you stand out.

*Good luck to everyone interviewing for internships.*

### A List of the Top Values Employers Look for in Employees.

#### Strong Work Ethic

Employers value employees who understand and possess a willingness to work hard. In addition to working hard it is also important to work smart. This means learning the most efficient way to complete tasks and finding ways to save time while completing daily assignments.

#### Dependability and Responsibility

Employers value employees who come to work on time, are there when they are supposed to be, and are responsible for their actions and behavior. It's important to keep supervisors abreast of changes in your schedule or if you are going to be late for any reason. This also means keeping your supervisor informed on where you are on all projects you have been assigned.

#### Possessing a Positive Attitude.

It is the enthusiastic employee who creates an environment of good will and who provides a positive role model for others. A positive attitude is something that is most valued by supervisors and co-workers and that also makes the job more pleasant and fun to go to each day.

#### Adaptability

Employers seek employees who are adaptable and maintain flexibility in completing tasks in an ever changing workplace. Being open to change and improvements provides an opportunity to complete work assignments in a more efficient manner while offering additional benefits to the corporation, the customer, and even the employee. Adaptability also means adapting to the personality and work habits of co-workers and supervisors. Each person possesses their own set of strengths and adapting personal behaviors to accommodate others is part of what it takes to work effectively as a team.





**Committee Meeting:  
Monday, February 28, 2011 12-12:50pm**

Risk Management Career Development	SAC 217 A
Actuarial Science Career Development	SAC 217 B
Student Affairs	SAC 217 C
Community Affairs	SAC 217 D
Public Relations	SAC 223
Math Competition	SAC 220
MIS	GIS Office

**Upcoming Gamma Happenings**

**Gamma Pot Luck**

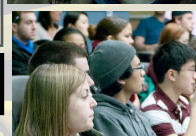
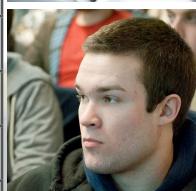
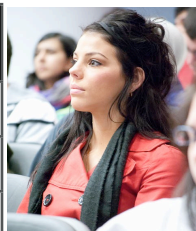
Tuesday, March 22, 2011  
Samsung Room, 6-8pm

**Date Auction**

Wednesday, March 30, 2011  
Draft Horse, 6-9pm

**Sigma Chapter's 20th Gamma Gala**

Friday, April 8, 2011  
Crowne Plaza, 6-10pm



**5th Annual Beef & Beverage**

Come on out to the 5th Annual Beef & Beverage on Saturday, March 19, 2011. For the donation of just \$12 to *Aid for Friends*, you will receive a ticket to this event, which includes food, live music, mechanical bull rides, drink specials, and lots of fun! To buy a ticket in advance, speak to a Gamma officer. Tickets will also be offered at the door on the night of the event and will be \$15 rather than \$12. Not 21? No problem! Those under the age of 21 are welcome at the Beef N' Beverage until 8:00pm. Want to invite friends from outside of Gamma? Please do! As they say, the more the merrier, and remember that every ticket purchased is going to the great cause of our Charity of Choice for the 2010-2011 academic year, *Aid for Friends*. Hope to see you there!

**Saturday, March 19, 2011 Buckheads Saloon, 4-8pm**  
461 N 3rd Street, Philadelphia

**Bake Sale**

Look for our booth in the Alter Hall Lobby and stop by for some delicious Mardi Gras themed treats and support Gamma's Charity of Choice, *Aid For Friends*! Perfect with your morning coffee or as a post lunch desert. All proceeds go to support our Charity Of Choice: *Aid For Friends*.

**Friday, March 4, 2011**  
**Alter Hall Lobby, 9am-3pm**



RBD WARNING:

Sudoku is not intended to prevent, treat, mitigate or cure boredom during class time.

5	3	2		8	6		
		8			3		
				4			
1				3		5	
	4		5	1		9	
	5		8				1
			2				
		6			7		
		5	7		9	3	4

