



# Temple University

## Gamma Iota Sigma, Sigma Chapter

### Alumni Newsletter, June 2016

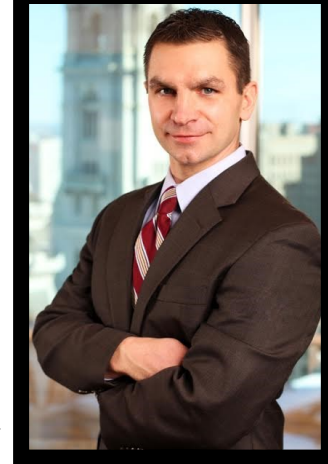


## Alumnus Spotlight: Cassidy Starkey

The Graham Company, AVP & Senior Claims Consultant,  
Class of 1999, RMI, International Business, and Finance Majors

Cassidy Starkey joined The Graham Company in 2005 and is an Assistant Vice President. As a claims consultant, Starkey manages and designs Claims Management Programs for construction management companies, contractors, governmental entities, universities and manufacturers. Starkey has extensive industry experience, having worked in various capacities for CNA Insurance in Chicago, IL, and for two global insurance brokerage firms. Previously, he spent several years with Philadelphia-based law firm Ballard, Spahr, Andrews & Ingersoll, LLP, where he handled various legal matters for manufacturers, financial institutions, investment managers, mutual funds, public utilities and universities. Starkey lives in a Philadelphia suburb with his wife Christy (who he met at Temple and who is also a graduate of the risk program) and their two children.

Cassidy remains very active in GIS by participating in the Alumni Student Mentorship Program, the Broad Street Run, and also helps organize our Annual Alumni Golf Outing.



## Past Temple Event:

### GIS & RIHM Graduation

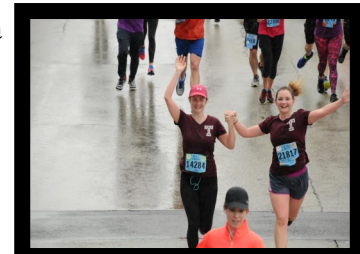
On May 6<sup>th</sup>, 2016 senior members of Gamma Iota Sigma and the Department of Risk, Insurance, and healthcare management celebrated their graduation from Temple University. The class of 2016 consists of 119 Students (32 AS + 87 RMI) and at least 98 full-time jobs were placed. Students attended a luncheon hosted by the department on the day of graduation in Alter Hall to socialize and reminisce on the memories they've made at Temple and the hard work they put in to achieve their goal.



## Past Alumni Event:

### Broad Street Run

On April 30<sup>th</sup>, the Sigma Chapter participated in the 2016 Blue Cross Broad Street Run, the nation's largest 10-mile road race. This year, in coordination with Temple Police, we were able to put together a team consisting of 34 alumni, 10 faculty members, 25 friends, and 58 Temple students. Our team members battled through the rain and cold to finish the race, and participated in our post-race barbecue. We raised \$4100 for our charity Brave Hearts for Strong Minds. All Participants represented the Sigma Chapter and Temple University very well.



## Upcoming Alumni Events

### **Center City Sips Happy Hour**

Philadelphia, Location TBD

Wednesday 6/22, 5-7 pm

### **New York City Happy Hour**

Location TBD, July TBD

### **Center City Sips Happy Hour**

Philadelphia, Location TBD

Wednesday 8/31, 5-7 pm

### **Golf Outing**

North Hills Country Club

Monday 9/12, 7 am - 8 pm

*\*Students will be in attendance as well\**

## Upcoming Temple Events

### **First Day of Classes**

Monday 8/24

### **Actuarial Science Intern/Career**

### **Reception**

October TBD

### **RMI Career Reception**

October TBD



## **Have you moved? Changed Jobs?**

**If yes, please update your info so we can stay connected!**

[http://sigmachapter.org/alumni\\_update\\_form.php](http://sigmachapter.org/alumni_update_form.php)

### Did you Know?

#### 2015-2016 GIS & Department of RIHM Accolades

**119 Students (32 AS + 87 RMI) Graduated in May 2016**

**144 Internships (51 AS+93 RMI) & 98 Jobs (33 AS+65 RMI) placed in 2015-2016**

**12 Scholarship Awards given to 40 Students for 2015-2016**

**Temple ranks #5 for Insurance Programs in the U.S. News World Report**

**Temple ranks #4 for RMI degrees on Property Casualty 360**